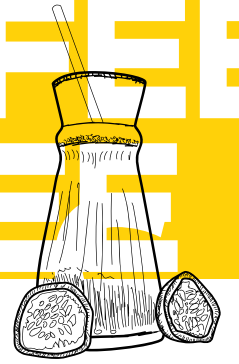
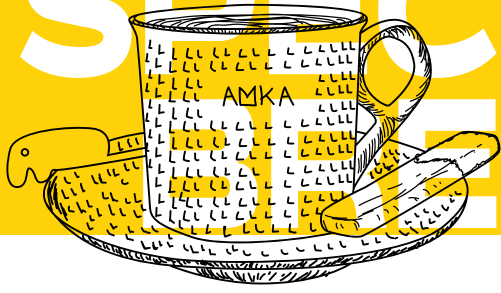


SPECIALTY COFFEES & COFFEES



SPECIALTY BREWS

specialty coffee (single origin) - *special reserve choose between:

- carbonic maceration
- natural anaerobic fermentation
- Hybrid blend
- Seasonal / Coffee of the Week

(new coffees, rare lots, experimental releases)

V60 ✨ **450**

A pour-over brewing method that highlights the coffee's intricate flavors, producing a clean and nuanced cup

FRENCH PRESS ✨ **390**

A full-immersion brew method, delivering a rich and bold coffee with a deep, robust flavor profile

PARAGON SUNRISE ✨ **750**

Precision cooling with a titanium ball, intensifying flavors and aroma in each cup

AMKA EXPERIENCE ✨ **2550**

A 3-course guided tasting featuring the season's best lots:

- Paragon brew
- Milk/ non milk course
- Espresso finale

Designed for the curious, the seasoned, and the seekers.

Hybrid blend

We ferment our cherries in a sealed container for three days, rinse them lightly, then return them to an airtight container with hydrogen for seven more days. The result is a wine with deeper aroma and richer character.

Seasonal / Coffee of the Week

A curated spotlight on standout coffees chosen for their unforgettable flavour, unique processing, or powerful origin story. Each lot brings a new discovery from bright washed profiles to rare lots that spark curiosity and conversation.

Crafted to delight you who craves something special, limited, and worth talking about.

CLASSICS

	SINGLE	DOUBLE	TRIPLE
ESPRESSO	250	280	300
MACCHIATO	260	290	310
CAPPUCCINO	300	350	400
LATTE MACCHIATO	310	350	390
CAFFE LATTE	320	360	410
AMERICANO	250	280	320
MOCHA	360	410	460
VANILLA LATTE	390	450	500
CARAMEL LATTE	390	450	500
HAZELNUT LATTE	390	450	500
HOT CHOCOLATE	-	-	450

ICED COFFEE

JAPANESE ICED COFFEE ✨ **450**

ICED LATTE **470**

ICED CAPPUCCINO **490**

ICED MOCHA ✨ **550**

AMKA BROWN SUGAR ICED LATTE **550**

CARAMEL CLOUD ICED COFFEE **550**

Carbonic Maceration:

Whole coffee cherries are fermented in a sealed tank with CO2. It enhances fruity flavors and complexity in the coffee.

Anaerobic Fermentation:

Fermenting coffee cherries in a tank without oxygen. It develops unique, intense flavors by allowing specific microorganisms to thrive.



Our coffees are available with regular/low fat skimmed milk/non-dairy option of almond/oat/soy milk @ 100/=

Add your flavor: vanilla/caramel/hazelnut @ 150/= sprinkled with cocoa or cinnamon powder.

*All our coffees are made from an exclusive selection of **specialty coffee beans** thoughtfully sourced, and sustainably processed for your ultimate enjoyment.

- each one a **special reserve**





INFUSIONS

SPECIAL DAWA

YERBA MATE DAWA 750
yerba mate, lemon, ginger, honey

DAWA SAWA JAR (boozy @ 1050) 750
ancestral medicine, ginger, lemon, mint

LAVENDER (boozy @ 1050) 750
beetroot, ginger, apple, lemon, jaggery or honey

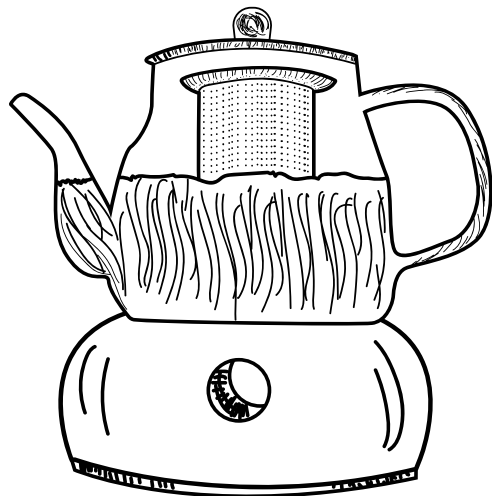
BRAIN POWER (boozy @ 1050) 750
hibiscus, pineapple, guava, ginger, cinnamon

QUEEN KOI (boozy @ 1050) 750
yerba mate, coconut, ginger, lemongrass, pineapples, chamomile, mint

TURMERIC GOLD DAWA (boozy @ 1050) 750
fresh turmeric, ginger, lemon, honey

MINT GINGER DETOX DAWA 750
ginger, fresh mint, lemon, honey

"Herbal wellness blends to uplift, soothe, and energize."



ICED TEA

CLASSIC ICED TEA 410

PEACH ICED TEA 490

VANILLA ICED TEA 490

HERBAL INFUSIONS

TRADITIONAL MATE (boozy @ 1050) 750
yerba mate, jaggery or honey

RELAXING ORANGE ROOIBOS 750
rooibos, chamomile, mint, passion fruit, orange (boozy @ 1050)

HOT BEVERAGES

♥ Experience the richness: Of our pure *milk-based white* teas – no water added.

*All our black teas are *orthodox*

BLACK TEA POT 320
black tea

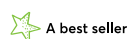
AFRICAN TEA POT 450
black tea, milk

KASA SPICED TEA 480
white tea, masala, cinnamon, cloves, cardamom, vanilla

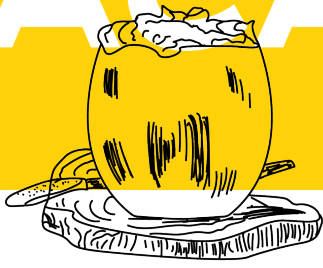
GOLDEN VANILLA CHAI 470
black tea, milk, vanilla, cinnamon, sugar

SPICED CARAMEL TEA 470
black tea, milk, caramel, cinnamon, sugar

♥ **Yerba mate:** Energizing South American tea, cherished for its *antioxidant-rich* profile and *metabolism-boosting* properties.



CACAO SMOOTHIES & JUICES



CACAO

Our cacao is exclusively *ceremonial-grade* and *single-origin*.

HOT TROPICAL 950

cacao, coconut milk, raspberry, strawberry, jaggery, tamarind

NUTMEG CACAO 950

nutmeg, cacao, tamarind, coconut milk, baobab, paprika, caramel, cayenne

SALTED CARAMEL CACAO 880

ceremonial cacao, milk, caramel, sea salt, tamarind

SMOOTHIES

CLASSIC 600

pineapple | strawberries | mango | banana

ENERGIZING ELIXIR 650

citrus fruits, pineapples, mint, ginger, peanuts, honey, moringa

GREEN GREEN 650

cucumber, spinach, apple, lime ginger, honey

QUEEN GLOW SMOOTHIE 650

mango, pineapple, coconut milk, chia seeds, honey

TROPICAL ENERGY BOOST 650

passion, orange, banana, honey

JUICES

♥ Savor the freshness – 100% freshly squeezed fruits.

MANGO 500

PINEAPPLE & MINT 500

PASSION 500

ORANGE 650

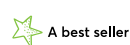
BEETROOT & MANGO 500

APPLE & GINGER 500

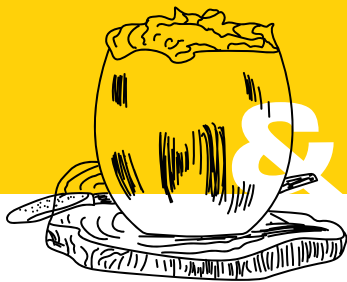
BAOBAB & TAMARIND 500

TROPICAL SUNRISE JUICE 550

mango, pineapple, orange



MILKSHAKES, MOCKTAILS & LEMONADES



MILKSHAKES

VANILLA SHAKED DOWN 600

vanilla gelato, with a boost of vanilla syrup

BIG WISH CHOCO CHIP M★ 630

choco cookies, vanilla gelato, milk

AMKA SHOW OFF M 630

strawberry, mango, banana, vanilla gelato

MANGO TANGO TANGO 630

vanilla gelato, mango, coconut

CAPPUCCINO SHAKE 630

epresso, vanilla gelato, milk

KASA TRADITIONAL MILKSHAKE 630

vanilla gelato,coconut,cinnamon, cardamom

BANANA CARAMEL SHAKE 680

banana, vanilla ice cream, milk, caramel

BERRY VANILLA SHAKE 680

berries, vanilla ice cream, milk, honey

CLASSIC CHOCOLATE SHAKE 680

chocolate, vanilla ice cream, milk

Cafe
AMKA

Eat Good · Feel Good

Prepared fresh, please allow
a few minutes



LEMONADES

PASSION LEMONADE M★ 700

passion fruit, lime cordial, lime

CLASSIC LEMONADE 650

lime cordial, lemon, sprite

STRAWBERRY LEMONADE 700

strawberry puree, lime cordial, lemon

KASA MAGIC LEMONADE 700

lime, condensed milk, h2o

PASSION MINT LEMONADE 700

lemon, passion, mint, sugar, sprite

GINGER HONEY LEMONADE 700

lemon, ginger, honey, sprite

MOCKTAILS

TWO OCEAN MOJITO ★ 700

pineapple, mint, lemon, red chili, blue curacao, sprite

STRAWBERRY MOJITO 700

Strawberry puree,lime,mint,sprite

NOJITO PASSION 650

Passion pulps,pineapple,mint, lime,sprite

AMKA SUNSET 650

orange, passion, grenadine, sprite

BLUE OCEAN BLISS 680

pineapple, blue curacao syrup, lemon, sprite

MINT PINEAPPLE CRUSH 650

pineapple, mint, lime, sprite

